

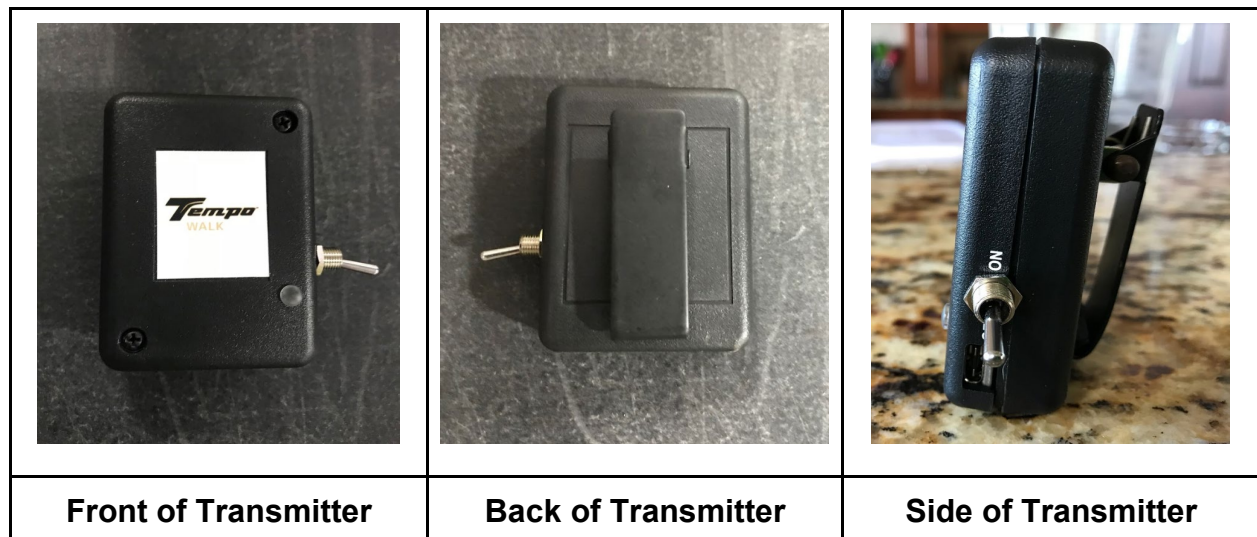
- To help avoid the possibility of losing control of the unit, reduce speed for adverse conditions such as wet grass or rough terrain.
- Obey all local rules concerning golf cars.
- The unit should be operated in only specified areas by trained users.
- Do not operate while under the influence of alcohol, drugs, or medications.
- Never operate Tempo Walk in dangerous weather conditions.
- This unit is not intended to be used where risk of falling objects exists. If your unit will be used in such an environment, contact your local dealer.

No one should operate the unit without first being instructed in the proper operation and use of the unit's controls. An experienced operator should accompany each first-time user on a test drive before allowing him/her to operate the unit alone.

## TEMPO WALK TRANSMITTER

### **⚠ WARNING**

- Submerging the transmitter in water will affect the performance of the internal electronics of transmitter. After submerging in water, contact your local Club Car distributor/dealer immediately.
- The transmitter should be charged daily. If the green light on the front of the transmitter is Flashing, it means the transmitter needs to be charged as soon as possible. If the green light is solid, the transmitter has sufficient charge level. See (Figure 16) for proper transmitter charging procedures
- If the transmitter is dropped or takes a significant impact, it may affect the performance of the transmitter. Should this occur, check the operations by attempting to connect to the Tempo Walk unit. If the transmitter doesn't perform normally contact your local Club Car distributor/dealer for a replacement.
- Never operate the Tempo Walk unit with the transmitter in any position other than secured on your waist at the middle of your back. The transmitter should always provide a clear signal to TW by being pointed at the unit. Attempting to hold the unit in your hand, placing it in a pocket or putting the transmitter anywhere other than on your waist is an unsafe practice.



## REPLACING A TOGGLE SWITCH

The most common maintenance item on the transmitter is a broken toggle switch.

Replacement is easy

- 1) Make sure the transmitter is turned off.
- 2) Loosen the nut securing the toggle switch at the side of the transmitter case.
- 3) Remove the 2 screws on the front lid of the case.
- 4) Gently remove the transmitter case lid.
- 5) Gently unplug the white toggle switch connector from the Transmitter board see figure 10.
- 6) Plug in a new toggle switch to the transmitter board. Make sure the toggle switch is oriented so that the "On" position will be up when the case lid is reattached.
- 7) Repeat steps 2-4 in reverse order to close and secure the transmitter case.

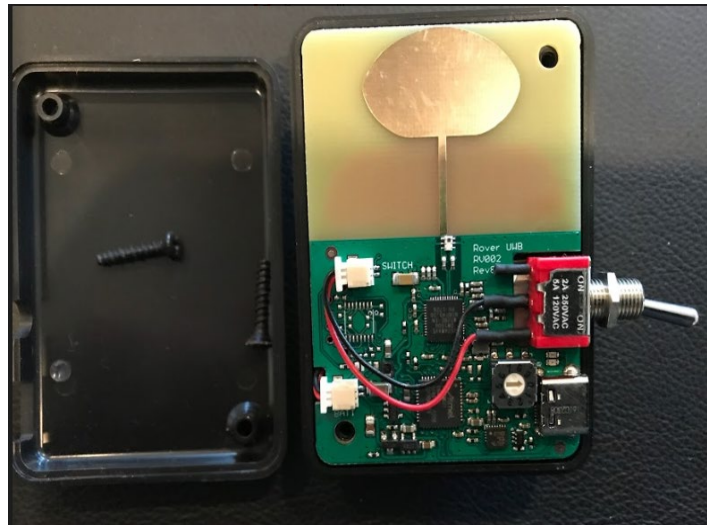


Figure 10 Opened Transmitter

## CHANGING CHANNELS ON TEMPO WALK

### **⚠ DANGER**

- Never have 2 or more Tempo Walk units with the same channel turned on, in the same proximity (i.e. 500 Yards).
- Never have 2 or more Tempo Walk Transmitters with the same channel turned on, in the same proximity (i.e. 500 Yards)

### **⚠ WARNING**

**Make sure all units in the immediate area are turned off as well as all transmitters**

Changing the channel of a Tempo Walk unit requires two steps. First you must set the channel on the Tempo Walk transmitter, and second you must set the channel on the unit itself. These channels must be the same for the unit to operate properly